

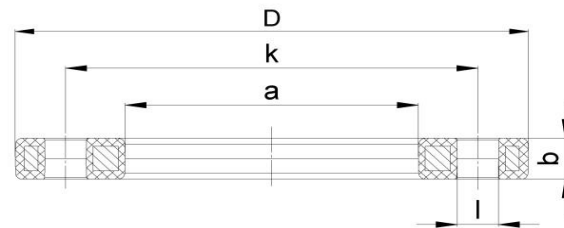
## BACKING FLANGE, PP-STEEL ANSI

03 Update - 05/2022

### TECHNICAL DATA

Article No	001 530 7121 0075
d (mm)	75
DN (mm)	65
Inch	2½"
D (mm)	184
a (mm)	92
k (mm)	139,7
b (mm)	18
l (mm)	20
Weight (Kg)	1,290
Box Quantity (pcs)	8
Box Dimension (pcs)	31x24x16,5

### INJECTION MOULDED



### IDENTIFICATION OF PRODUCT

D	75x2½"
BOLT CIRCLE	150 lbs
RAW METARIAL	PP %30 Glass-fibre Reinforced with steel ring UV-Resistant suitable for outdoor use

### SPECIFICATION

NUMBER OF HOLES	4
BOLT	M 16
TIGHTENING TORQUE (Nm)	40

TRADEMARK	NTG
EXECUTION	Injection Moulded
PRESSURE CLASS	Class 150
STANDARD	ANSI ASME B16,5 Class150 ASTM D4024 BS 1560 BS EN 1759

Tolerance on diameters and thickness according to the standards. The other dimensions are specialized. Tolerance  $\pm 5\%$ . NTG PLASTIK reserves all the right to change any information without giving prior notice. The production, distribution and utilization of this document without explicit authorization is prohibited.